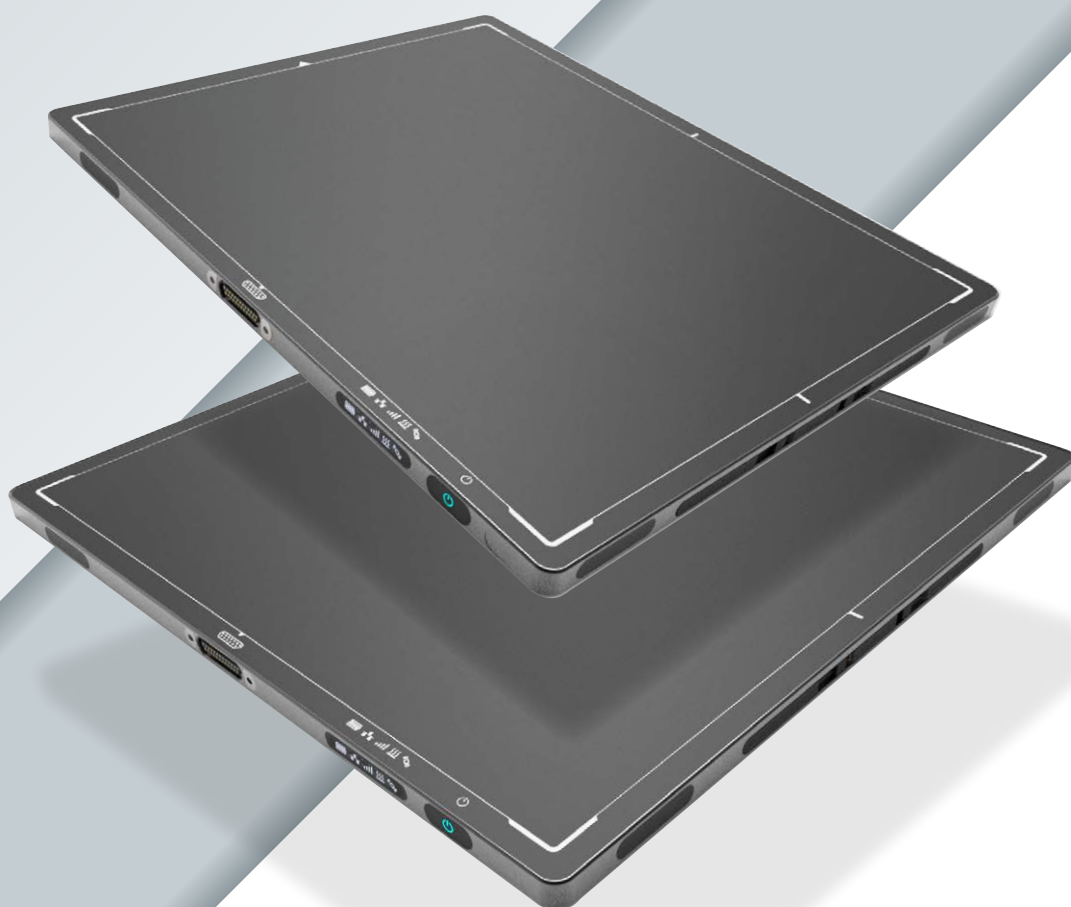


LIGHTWEIGHT & WIRELESS **DRA 3543/4343 NDT**

HIGH-RESOLUTION FLAT PANEL DETECTORS



Digital Intelligence - Ready to Change.
www.duerr-ndt.com



Technical data

DRA 3543 NDT

DRA 4343 NDT

Active area	350 x 426 mm (14 x 17")	432 x 432 mm (17 x 17")
Dimensions (H x W x D)	384 x 460 x 15.5 mm	460 x 460 x 15.5 mm
Weight	3.2 kg (7 lbs)	3.8 kg (8.4 lbs)
Number of pixels	3524 x 4288	4288 x 4288
Image transfer time (wired/wireless)	0.5/3 s	0.6/3.6 s
Pixel pitch	100 µm	
Scintillator options	CsI, GOS	
ADC	16-bit	
On-board memory	1 GB DDR3, 8 GB SDHC card	
Interface	Gigabit Ethernet (TCP-IP), WLAN (802.11n @ 5 GHz)	
Battery	Lithium-ion, 46.6 Wh, charging time 3h	
Operating conditions	10 to 35°C (50 to 95°F), 20 to 75 % humidity	
Housing	Aluminum frame, carbon-fiber entrance window	
Software	DÜRR NDT D-Tect 9.7 or higher	

Important features

- ✓ High resolution 100 µm pixel pitch (5.0 lp/mm)
- ✓ Automatic Exposure Detection (AED)
- ✓ Wi-Fi interface (Station and Access Point modes)
- ✓ OLED display with Wi-Fi, LAN, battery, and sensor status indicators
- ✓ Docking connector for Gigabit Ethernet, power and data sync
- ✓ On-board pixel corrections and image storage
- ✓ Dynamic mode with 8 fps at 200 µm resolution
- ✓ Fast image preview



Status display



Docking connector



Two-bay battery charger